

## NLB Headlamp Carrier Cleaning System

A unique project sold to an automotive company is a prime example of NLB's ability to produce customized cleaning cabinets. In this project, the cabinet was designed to fit into a cut out section of the customer's conveyor line.

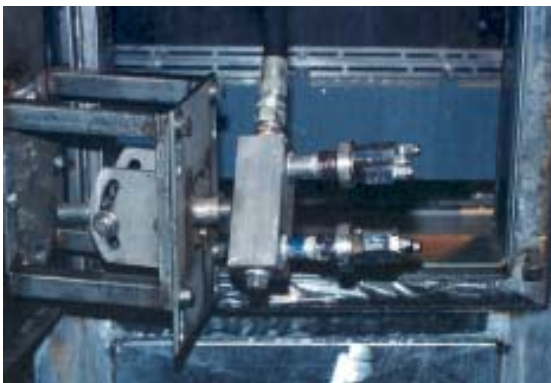
The Headlamp Carrier Cleaning System is used on a return line, which carries injection molded headlamp lenses through a base coat/clear coat or hard coat finishing system.

The carrier may carry one lens or up to 12 pieces, depending upon configuration. Overspray accumulates on the carrier and causes dirt in paint problems on the finished lenses.

The lenses are cleaned using two or more SPIN JET's® or SPIN-NOZZLE's®. Cleaning is followed by an air blow-off to dry the carrier prior to new parts being loaded. The base coat/clear coat removal utilizes a model 475E pump rated for 25 gpm (94.6 lpm) at 4,000 psi (276 bar) and the hard coat removal system uses a model 8100E, which is rated for 19 gpm (72 lpm) at 8,000 psi (551 bar)



NLB customer built carrier cleaning cabinet.



NLB SPIN-NOZZLES are installed on swing-out doors.



Headlamp carriers before and after cleaning.

*The Leader in High-Pressure Water Jet Technology*